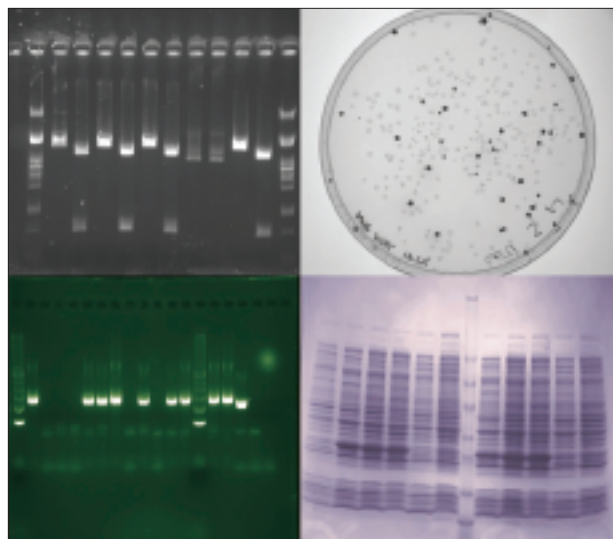


Geliance 200 Imaging System



Introduction

The Geliance™ imaging family, from PerkinElmer® Life and Analytical Sciences, is an exciting, high-performance family of bio imaging systems for all your fluorescence and chemiluminescence applications. From basic gel documentation to powerful chemiluminescence and 2-D protein gel imaging and analysis, Geliance is your system of choice from a name you know and trust, PerkinElmer – for all your reagent, software and laboratory instrument needs.

The Geliance 200 is an affordable and easy-to-use system for 1-D gel documentation and analysis. Advanced resolution imaging is easy with the standard 1.4 m pixel camera giving you a wide range of capabilities for fluorescent stains. Geliance includes UV transillumination, a UV-to-visible converter and epi- white light as standard, and optional overhead epi UV, making this system suitable for a wide variety of applications. Geliance includes GeneSnap Image Acquisition Software and 2 packages of GeneTools™, an advanced 1-D gel and

2-D spot blot analysis and image acquisition software fully automating image capture to analysis.

Key features:

- Real-time image capture, enhancement, and analysis. Photographic quality images are instantly ready to print to any PC compatible printer.
- 1.4 million pixel CCD camera with One Button Gel Doc Technology.
- Proprietary Extended Dynamic Range (EDR) to enhance the dynamic range of the 12-bit camera to 16-bits without losing linearity or resolution.
- Standard ethidium bromide DNA gel configuration with a UV transilluminator, UV-to-visible converter and epi-white light. Options include transmitted blue light, or overhead epi-UV.
- Each Geliance 200 comes with a compact dark-room including a 20x20 UV transilluminator as standard and a built-in safety door lock to avoid unintentional exposure of your sample to ambient light.
- State-of-the-art Neutral Fielding Correction to further improve the illumination evenness.

Applications:

With the Geliance systems, capture images of electrophoresis gels stained with any of these dyes:

- ethidium bromide
- Coomassie Blue
- silver stain
- SYBR® Gold
- SYBR® Green
- SYBR® Safe
- GelStar®
- SYPRO® Red
- SYPRO® Ruby
- SYPRO® Orange
- Fluorescein
- Rhodamine Red™
- Texas Red®
- Pro-Q® Diamond
- Deep Purple™

Also captures images of:

- Colony plates
- Cells in flasks
- Autoradiographs
- DNA, RNA or protein on membranes
- Spot and slot blots of DNA, RNA or protein
- TLC plates
- Cells or solutions in microtitre plates
- DNA or protein macroarrays.

Software:

Included with the Geliance systems are the GeneSnap Image Acquisition Software and GeneTools Image Analysis Software.

Software Features include:

- Simple and fast acquisition with computer-controlled image capture: camera, lens, darkroom, exposure, lighting, filter, and sensitivity settings – minimizes errors.

- Simple one-click operation for full, rapid and accurate analysis in seconds with minimal training.
- Automatic track, band, peak, lane and edge finding even on 'smiling gels' and grimaced bands. Automatic corrections on 'smiling bands'.
- Automatic band matching to align bands, determine track relationships and compare track data, but with the option of manual override for maximum control.
- Colony Counting: Vary position and size of area of interest. Proprietary algorithm gives near 100% accuracy – therefore no need for an adding or subtraction, manual editing function.
- Extensive reporting: Automatic analysis of multi-tier gels. Wide choice of background subtraction methods. Extensive calibration options (Rf, MW, BP, and mass) with standards library.
- Export results quickly to Microsoft® Word® and Excel® plus seamless operation with other reporting packages.
- Molecular weight libraries, including the ability to build your own library.

Standard features and specifications:

Geliance 200	
1.4 mega pixel camera	- 1392 x 1040 pixel resolution - 4096 / 65536 grey level - 12 bit / 16 bit A/D - 3.6 / 4.8 dynamic range
High aperture motorized zoom lens	- F1.2; 8-48 mm (10X) zoom
Cooling	- Ambient
Darkroom with door lock & UV shut off security mechanism	
Screwed in UV filter	Passband 550-640 nm, perfect for EtBr
White light EPI illuminator	
UV transilluminator	- size 20 x 20 cm - wavelength 302 nm - variable intensity range from 50 to 100%
UV-to-visible converter	- 31 x 33 cm
Neutral Field Screens, for Neutral Fielding correction	

PerkinElmer Life and Analytical Sciences
710 Bridgeport Avenue
Shelton, CT 06484-4794 USA
Phone: (800) 762-4000 or
(+1) 203-925-4602
www.perkinelmer.com



For a complete listing of our global offices, visit www.perkinelmer.com/lasoffices

©2006 PerkinElmer, Inc. All rights reserved. The PerkinElmer logo and design are registered trademarks of PerkinElmer, Inc. Geliance is a trademark and PerkinElmer is a registered trademark of PerkinElmer, Inc. or its subsidiaries, in the United States and other countries. SYBR, SYPRO, Pro-Q and Texas Red are registered trademarks of Molecular Probes, Inc. GeneTools is a trademark of Synoptics Limited Corporation. Deep Purple is a trademark of GE Healthcare (formerly Amersham Biosciences). JGelStar is a registered trademark of FMC Corporation and Microsoft, Word and Excel are registered trademarks of Microsoft Corporation. All other trademarks not owned by PerkinElmer, Inc. or its subsidiaries that are depicted herein are the property of their respective owners. PerkinElmer reserves the right to change this document at any time and disclaims liability for editorial, pictorial or typographical errors.